


Repairs and Restoration of Donnell Hall and The Carey Center Research Collection

February 20 – May 18, 2017



**The Conservation Center
February 20-24, 2017
L to R:**

**Toby Joyce (leaning)
Amanda Maddern
Paul Kirk
David Schmitt
Ben Dougherty
Sean Roach**











CHICAGO

128 158
129 159
133 163
134 165
138 178
162 176
167 182
181 15 pcs

CHICAGO

GALLERY B

157 158 181
162 163 182
165 167 183
168 172
174 176
178 179

15 pcs

Chicago

CHICAGO

GALLERY B

156 188
155 187
160 180
186 166
171 164
169 175
184
170
161
173
185

CHICAGO

17 pcs

ROPA PARA
VESTUARIO
WARDROBE BOX



LAYDOWN
WARDROBE BOX

36 1/4" x 21" x 10 1/2"
4.6 CU FT



Chicago



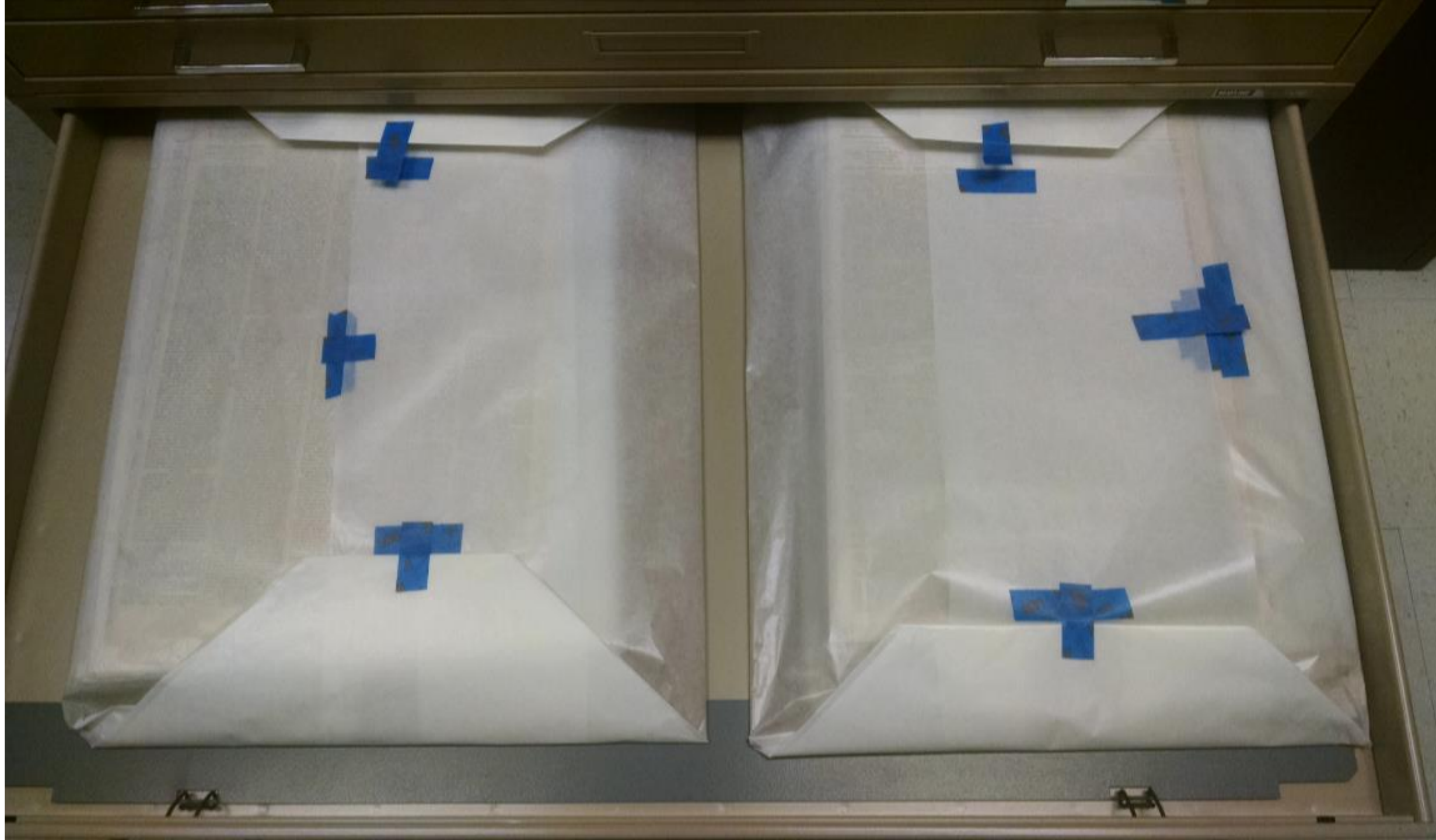








What size is your chest?
1. 12" and 18" high
2. 12" and 18" wide
3. 12" and 18" deep
4. 12" and 18" long
5. 12" and 18" wide
6. 12" and 18" high
7. 12" and 18" wide
8. 12" and 18" deep
9. 12" and 18" long
10. 12" and 18" wide
11. 12" and 18" high
12. 12" and 18" wide
13. 12" and 18" deep
14. 12" and 18" long
15. 12" and 18" wide
16. 12" and 18" high
17. 12" and 18" wide
18. 12" and 18" deep
19. 12" and 18" long
20. 12" and 18" wide
21. 12" and 18" high
22. 12" and 18" wide
23. 12" and 18" deep
24. 12" and 18" long
25. 12" and 18" wide
26. 12" and 18" high
27. 12" and 18" wide
28. 12" and 18" deep
29. 12" and 18" long
30. 12" and 18" wide
31. 12" and 18" high
32. 12" and 18" wide
33. 12" and 18" deep
34. 12" and 18" long
35. 12" and 18" wide
36. 12" and 18" high
37. 12" and 18" wide
38. 12" and 18" deep
39. 12" and 18" long
40. 12" and 18" wide
41. 12" and 18" high
42. 12" and 18" wide
43. 12" and 18" deep
44. 12" and 18" long
45. 12" and 18" wide
46. 12" and 18" high
47. 12" and 18" wide
48. 12" and 18" deep
49. 12" and 18" long
50. 12" and 18" wide
51. 12" and 18" high
52. 12" and 18" wide
53. 12" and 18" deep
54. 12" and 18" long
55. 12" and 18" wide
56. 12" and 18" high
57. 12" and 18" wide
58. 12" and 18" deep
59. 12" and 18" long
60. 12" and 18" wide
61. 12" and 18" high
62. 12" and 18" wide
63. 12" and 18" deep
64. 12" and 18" long
65. 12" and 18" wide
66. 12" and 18" high
67. 12" and 18" wide
68. 12" and 18" deep
69. 12" and 18" long
70. 12" and 18" wide
71. 12" and 18" high
72. 12" and 18" wide
73. 12" and 18" deep
74. 12" and 18" long
75. 12" and 18" wide
76. 12" and 18" high
77. 12" and 18" wide
78. 12" and 18" deep
79. 12" and 18" long
80. 12" and 18" wide
81. 12" and 18" high
82. 12" and 18" wide
83. 12" and 18" deep
84. 12" and 18" long
85. 12" and 18" wide
86. 12" and 18" high
87. 12" and 18" wide
88. 12" and 18" deep
89. 12" and 18" long
90. 12" and 18" wide
91. 12" and 18" high
92. 12" and 18" wide
93. 12" and 18" deep
94. 12" and 18" long
95. 12" and 18" wide
96. 12" and 18" high
97. 12" and 18" wide
98. 12" and 18" deep
99. 12" and 18" long
100. 12" and 18" wide





#212 FF-1

#213 FF-2

#214 FF-3

#215 FF-4

#216 FF-5

#217 FF-6

#218 FF-7

#219 FF-8

#220 FF-9

#221 FF-10

















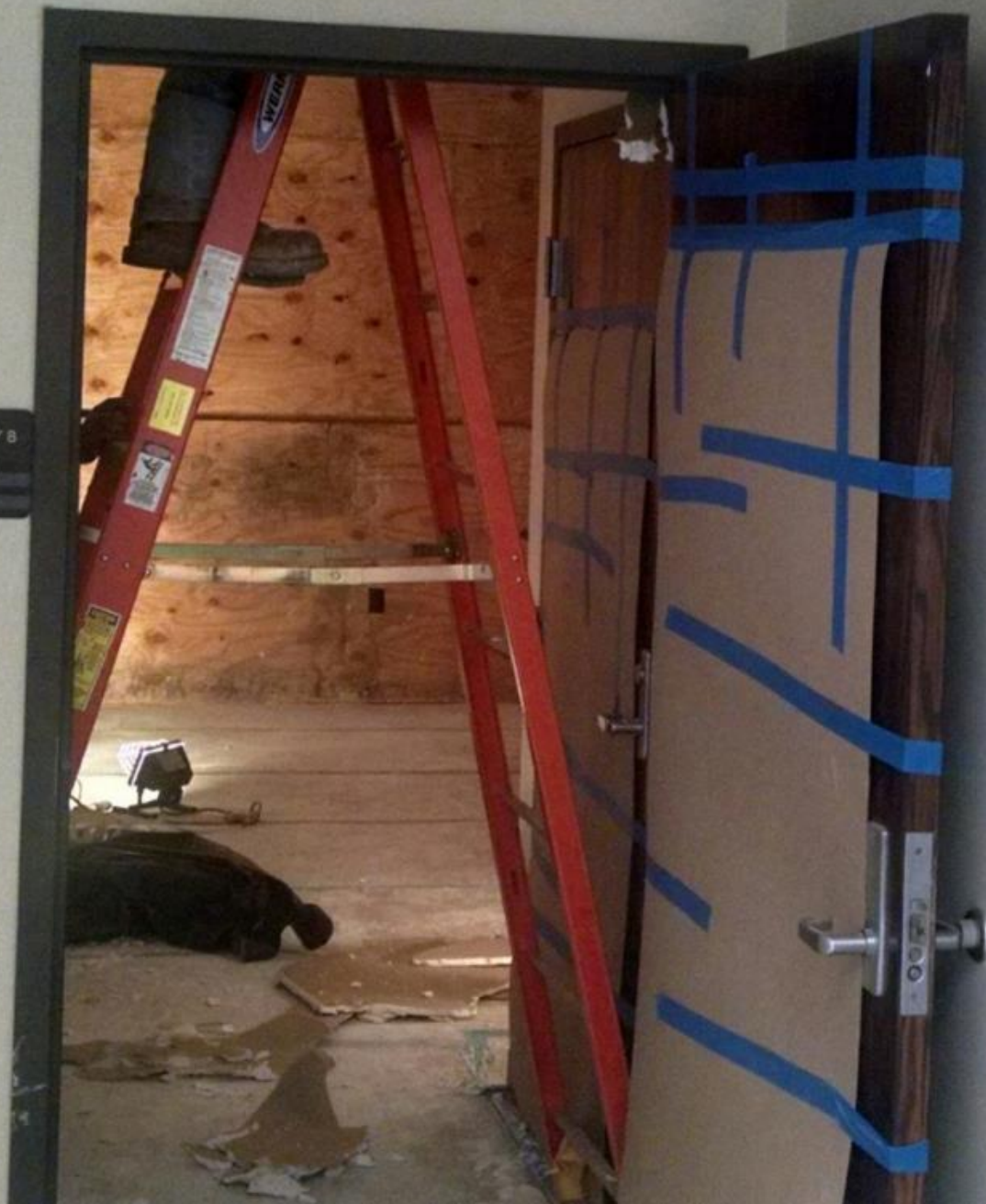


ARTEMIS

ARTEMIS



GALLERY 8















DRY STANDARD
Dwell - 155
Gross -
Floor -
Ward -
C/F -





Water Resistant
Drywall
1/2" x 4' x 8' 1/2'









DO NOT TOUCH
THIS AREA
IS UNDER
CONSTRUCTION
DO NOT ENTER









Das Werk ist ein
Skulptur

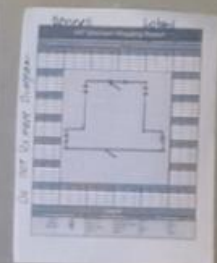
Nur im dunklen Licht
zu sehen, da es
nicht leuchtet





DRY STANDARD

Drywall	- 155
Concrete	-
Plaster	-
Wood	-
CMU	-

[illegible]

Donnell Hall
Dry Rooms









DONNELL HALL





DONNELL HALL



















DONNELL HALL





VAULT
SBS
A-2
2922
Box
3 of 3

VAULT
SBS
A-2
2922
Box
3 of 3

VAULT
SBS
A-2
2922
Box
3 of 3

VAULT
SBS
A-2
2922
Box
3 of 3

VAULT
SBS
A-2
2922
Box
3 of 3

VAULT
SBS
A-2
2922
Box
3 of 3

VAULT
SBS
A-2
2922
Box
3 of 3

VAULT
SBS
A-2
2922
Box
3 of 3

VAULT
SBS
A-2
2922
Box
3 of 3

VAULT
SBS
A-2
2922
Box
3 of 3

VAULT
SBS
A-2
2922
Box
3 of 3























**The Conservation Center
May 15-18, 2017**

L to R:

**Sean Roach
Sam Robinson
Paul Kirk
Amanda Maddern**

